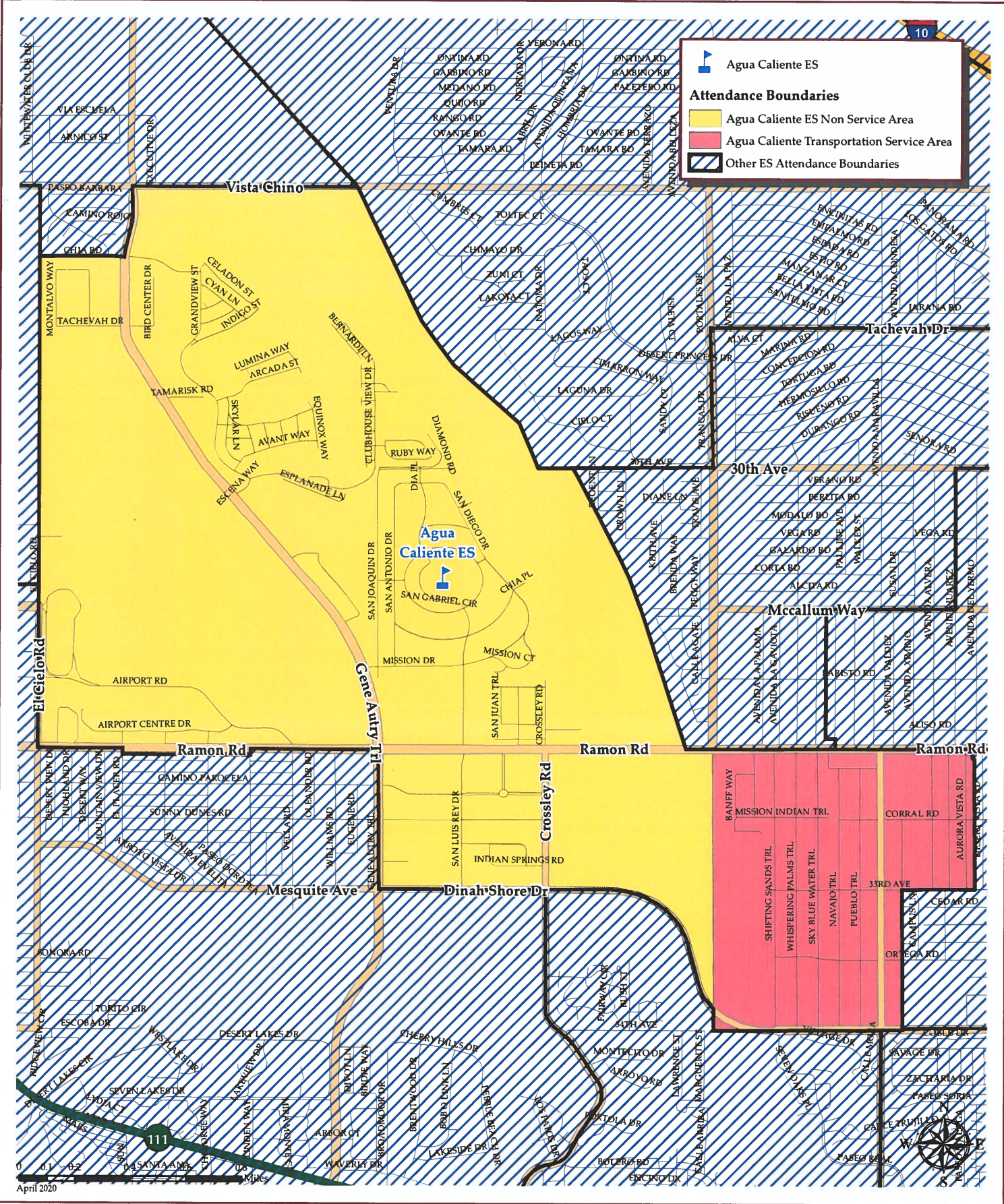
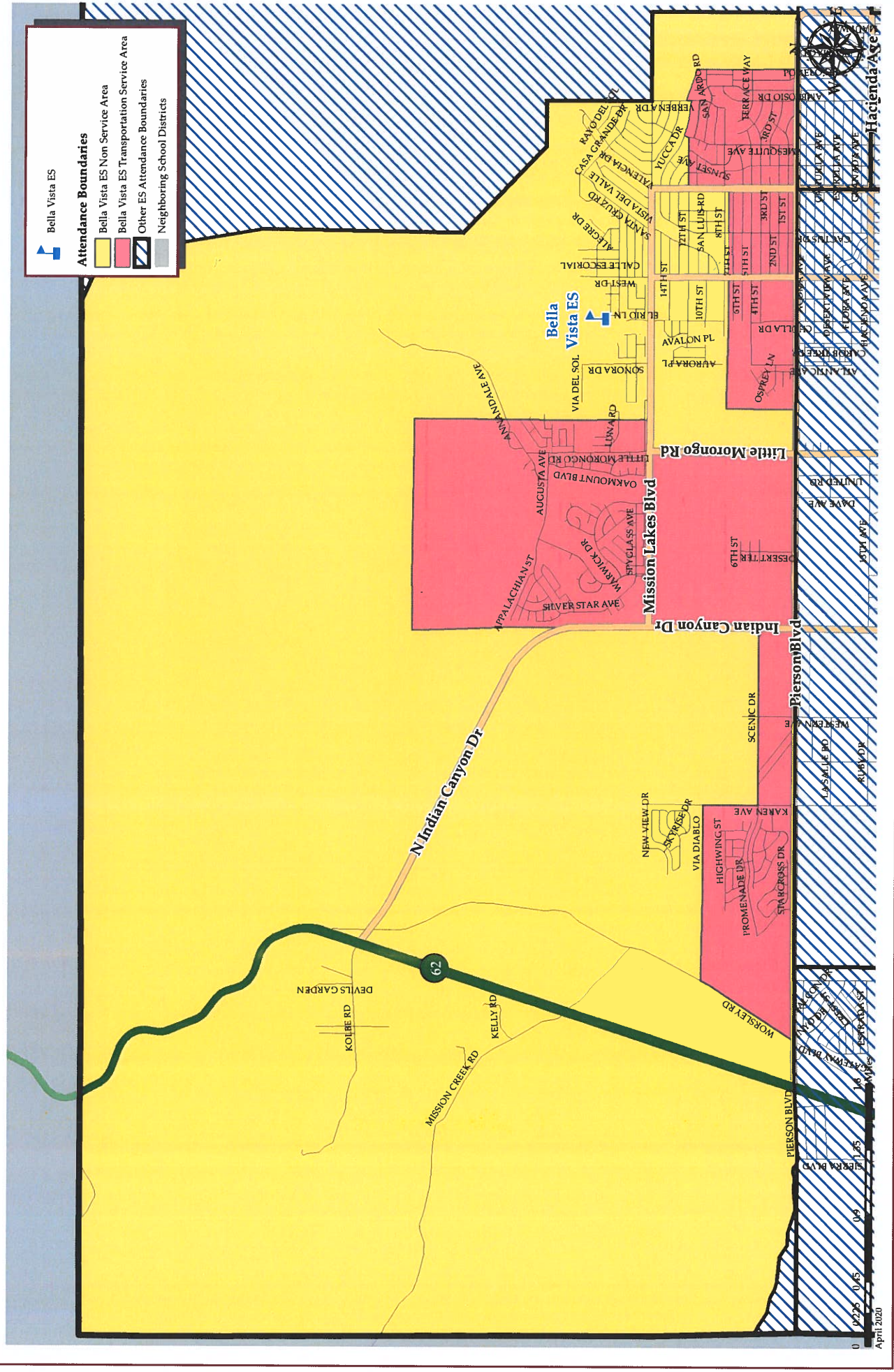


PALM SPRINGS UNIFIED SCHOOL DISTRICT

AGUA CALIENTE ES BUSING ZONES

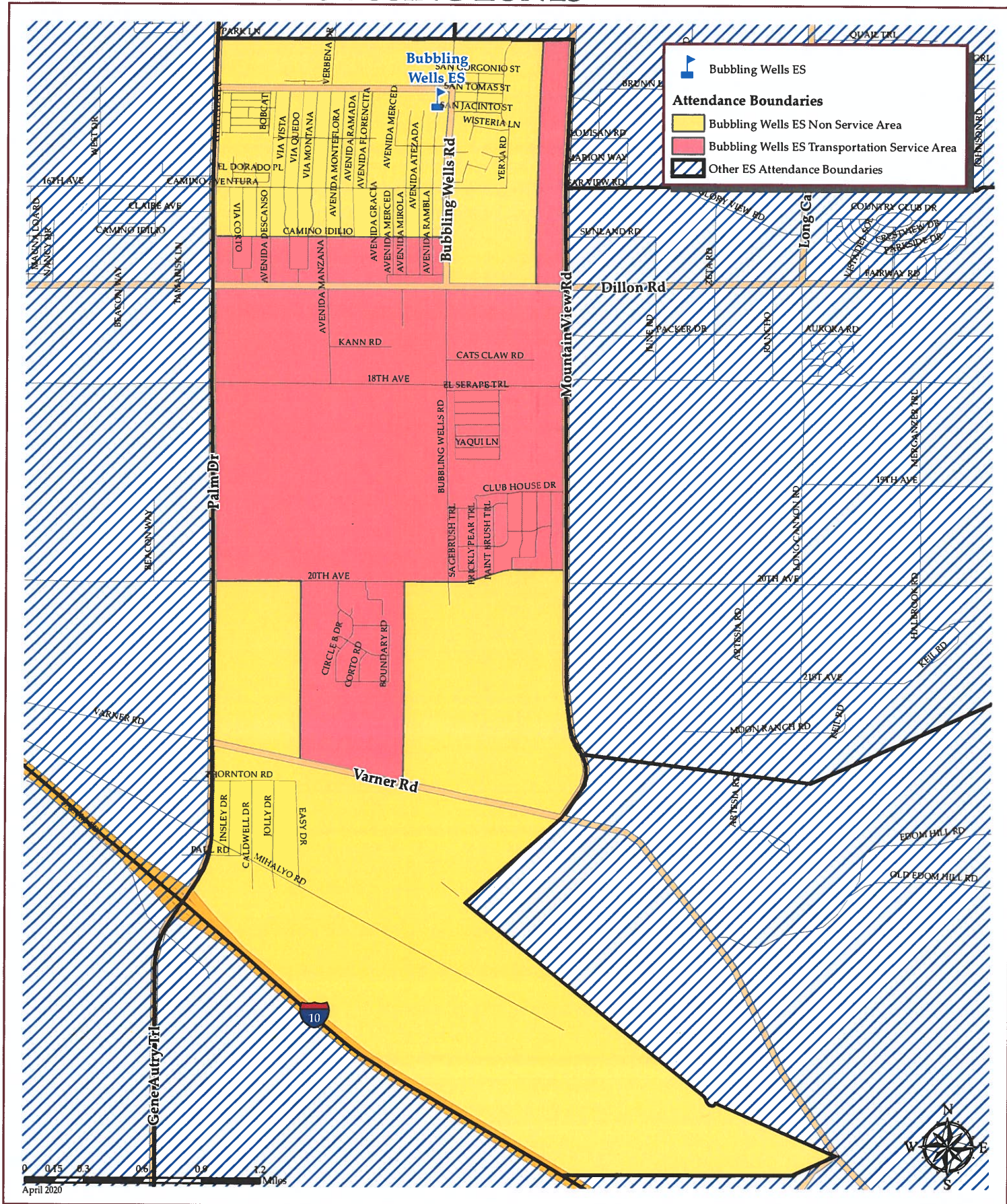


PALM SPRINGS UNIFIED SCHOOL DISTRICT BELLA VISTA ES BUSING ZONES



PALM SPRINGS UNIFIED SCHOOL DISTRICT

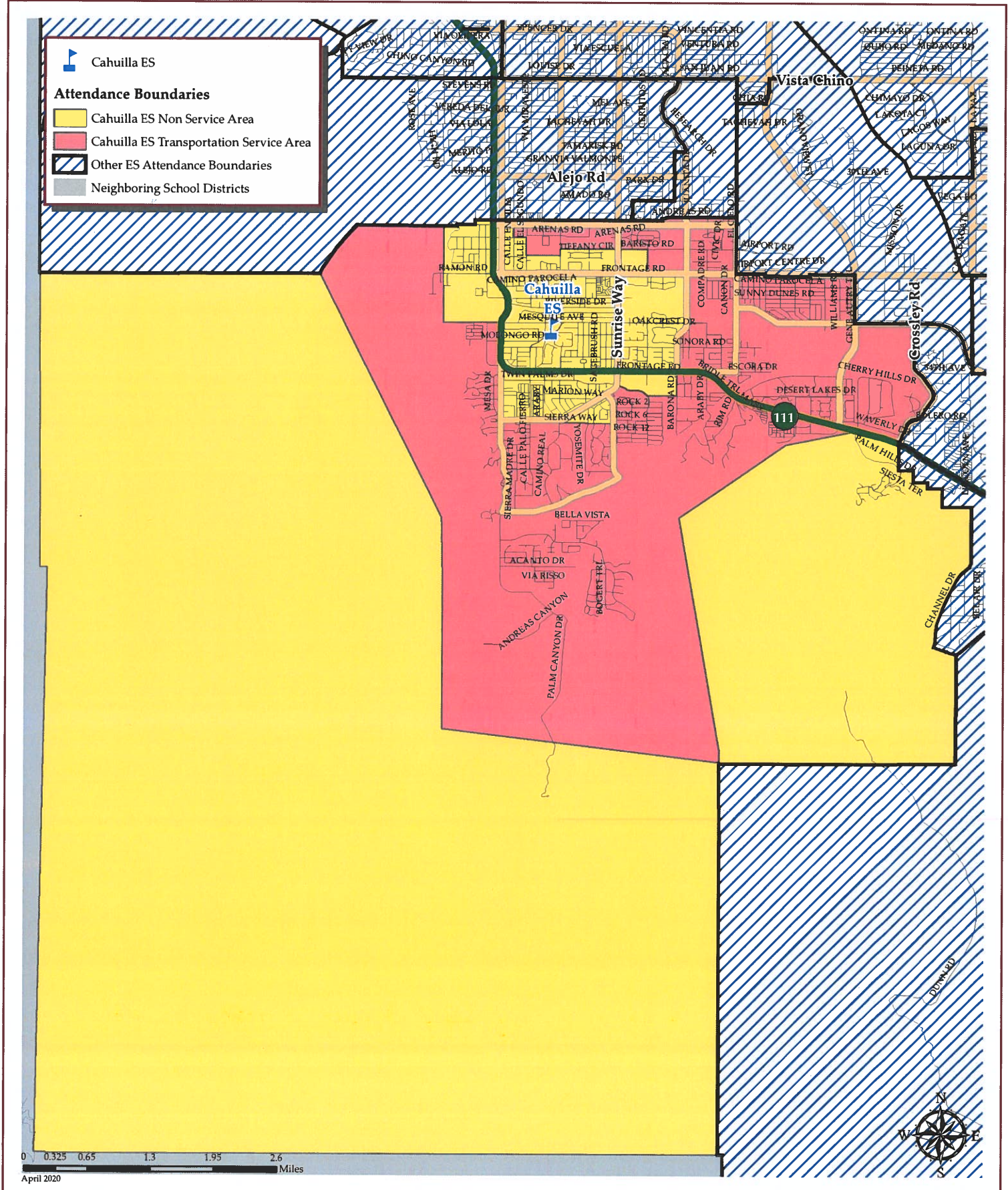
BUBBLING WELLS ES BUSING ZONES



The map displays the attendance boundaries for Cabot Yerxa Elementary School. The central area is colored yellow, representing the Cabot Yerxa ES Non Service Area. Surrounding this area are pink regions, which represent the Cabot Yerxa ES Transportation Service Area. Blue hatched areas indicate other elementary school attendance boundaries. The map includes a legend in the bottom right corner, a scale bar (0 to 0.4 miles), and a north arrow. Key streets shown include Desert View Ave, Miracle Hill Rd, Hacienda Ave, and Two Bunch Palms Trl. Other streets include Acoma Ave, Buena Vista Ave, Mesquite Ave, Estrella Ave, Flora Ave, Grand Ave, Verdona Dr, Park Ln, and Agua Dulce Dr. The map also shows the location of Cabot Yerxa ES, marked with a blue school icon.

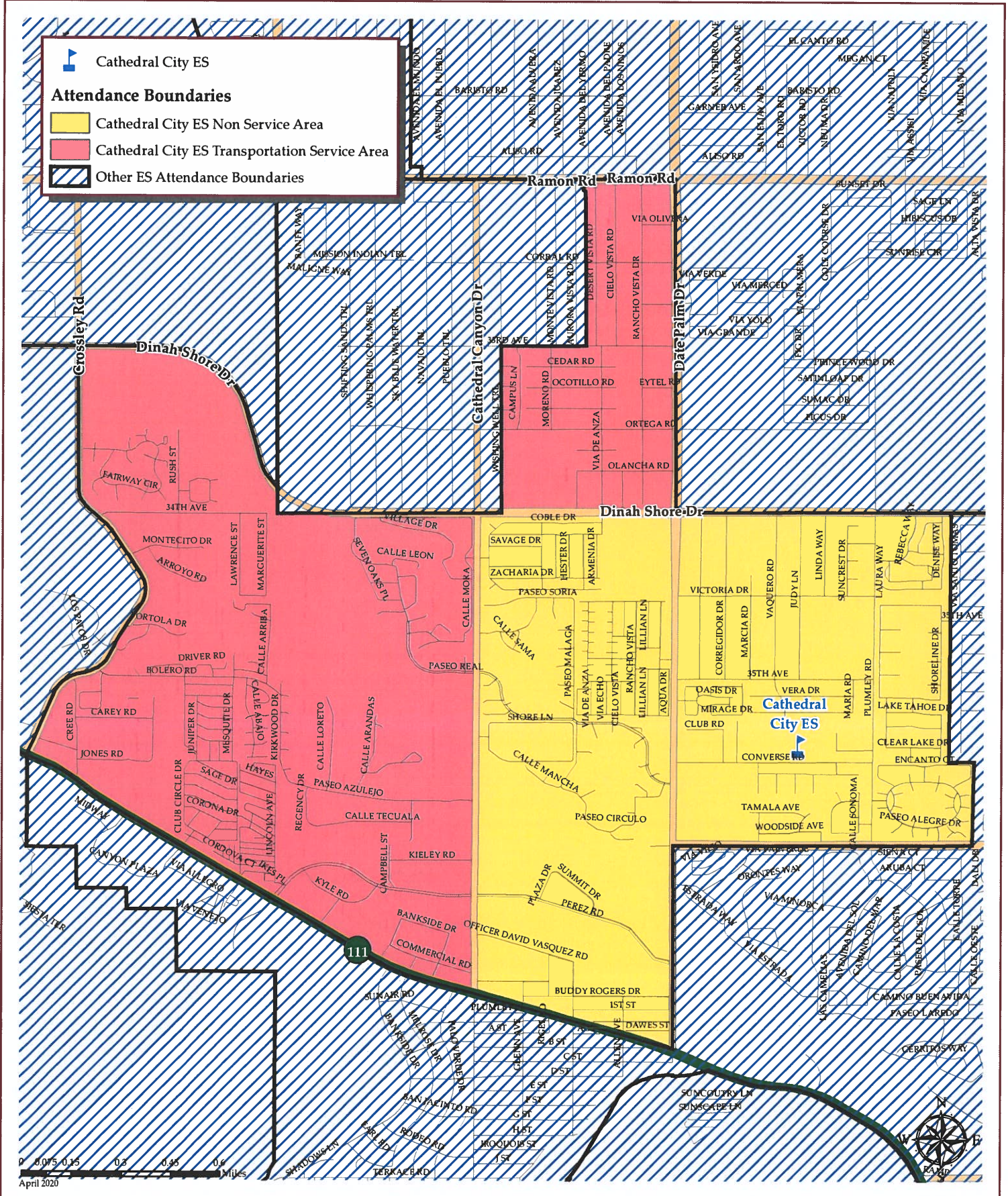
PALM SPRINGS UNIFIED SCHOOL DISTRICT

CAHUILLA ES BUSING ZONES



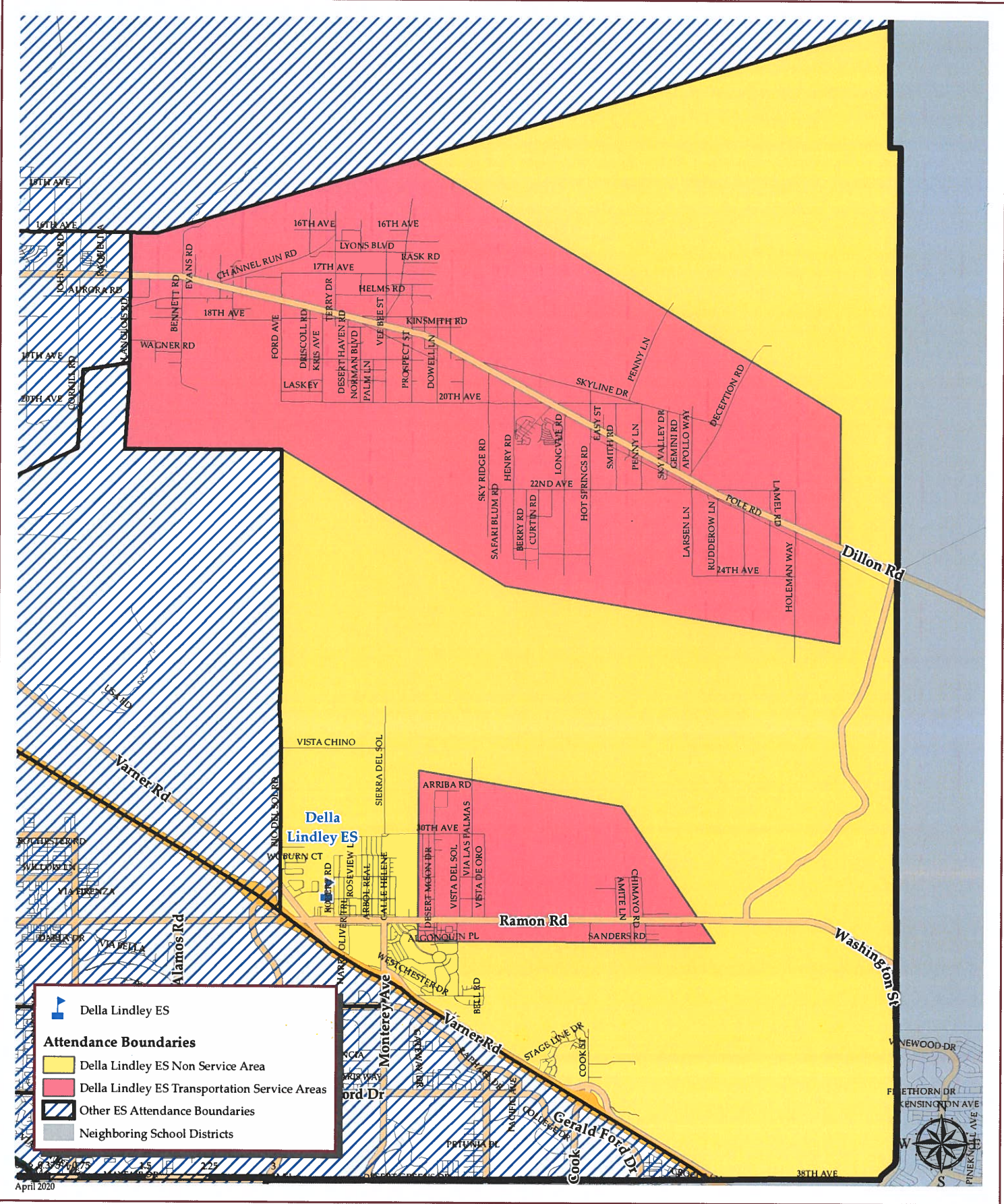
PALM SPRINGS UNIFIED SCHOOL DISTRICT

CATHEDRAL CITY ES BUSING ZONES



PALM SPRINGS UNIFIED SCHOOL DISTRICT

DELLA LINDLEY ES BUSING ZONES

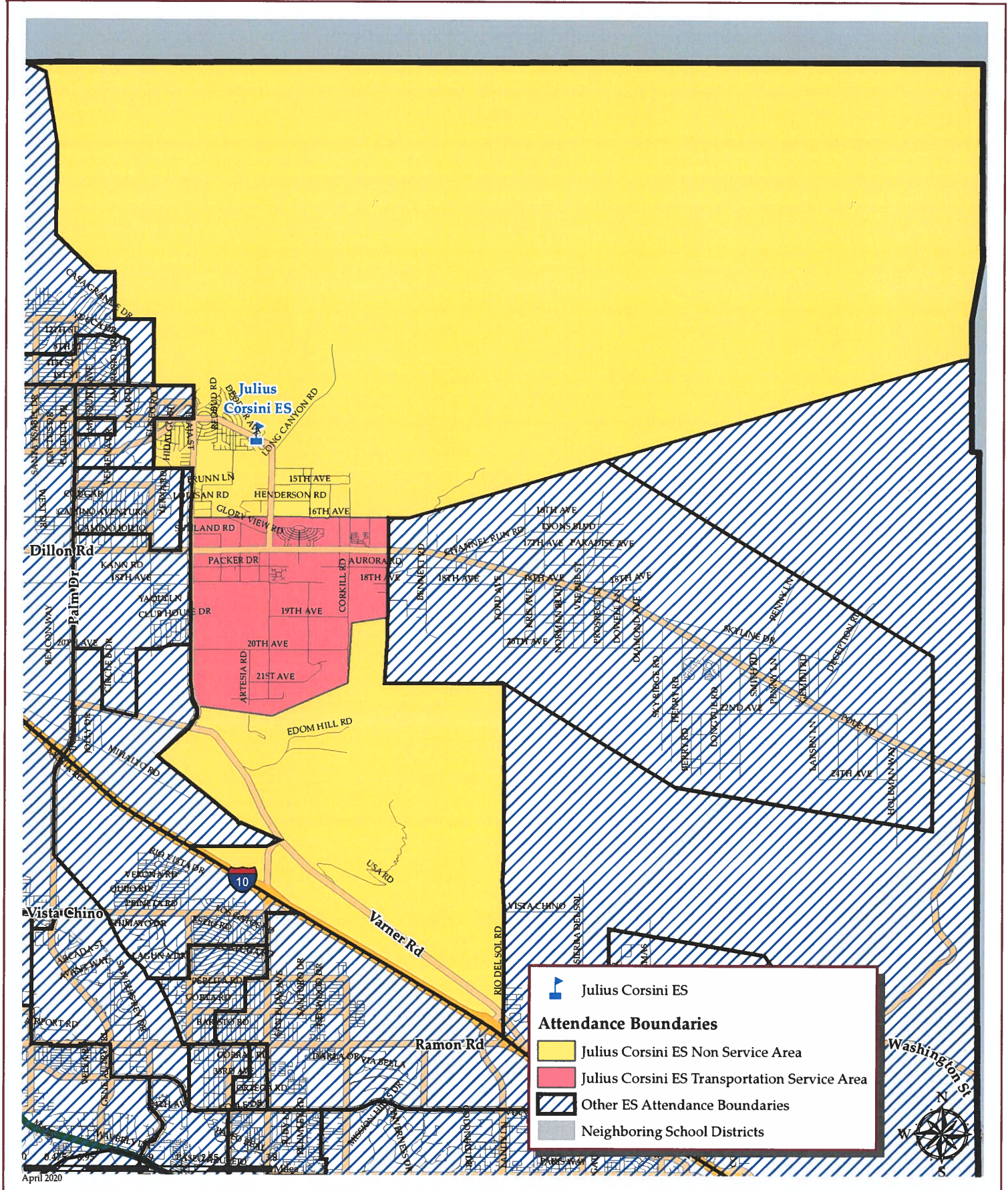


FINCHYES BUSING ZONES

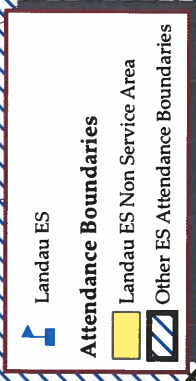


PALM SPRINGS UNIFIED SCHOOL DISTRICT

JULIUS CORSINI ES BUSING ZONES

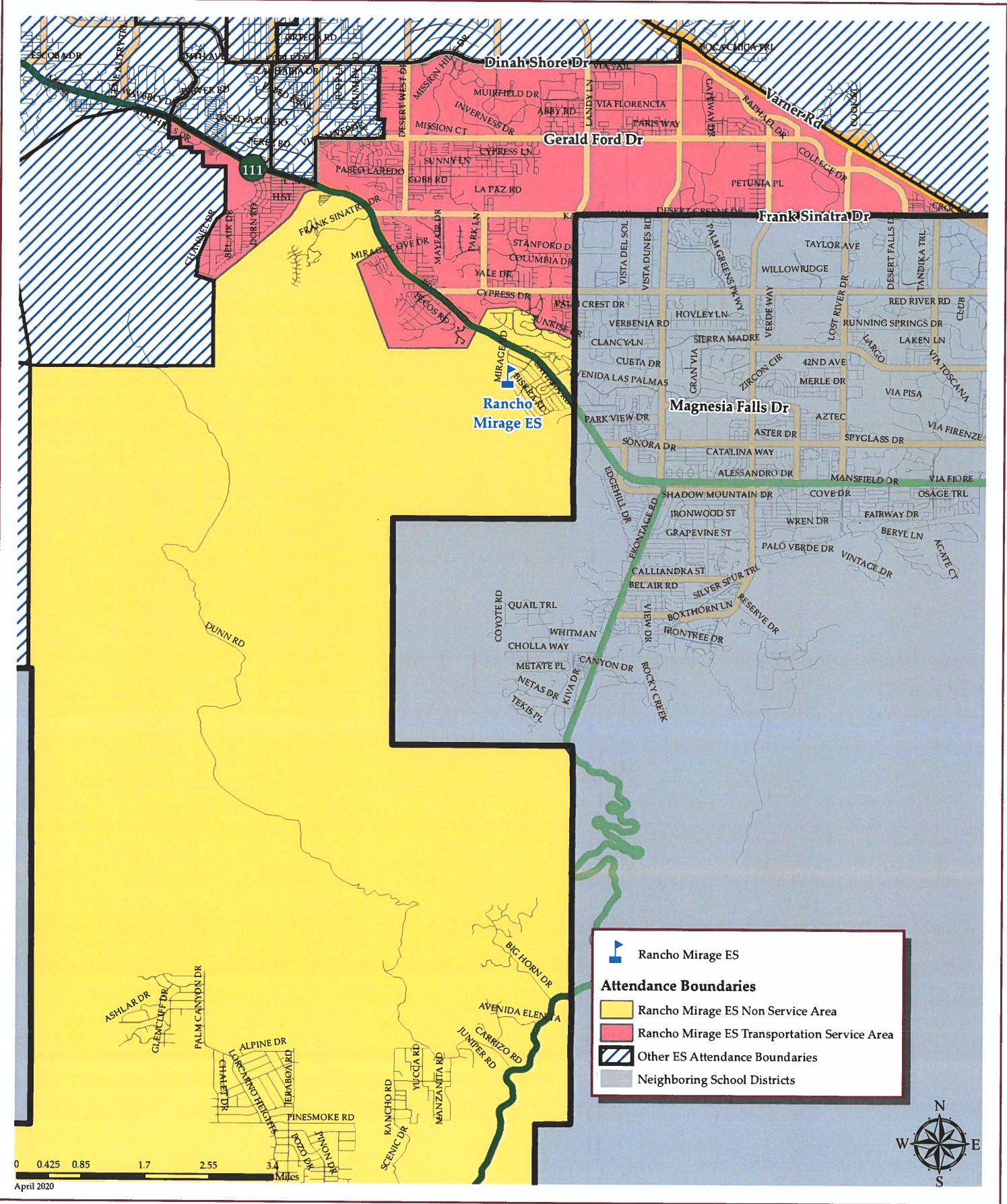


LANDAU ES BUSING ZONES

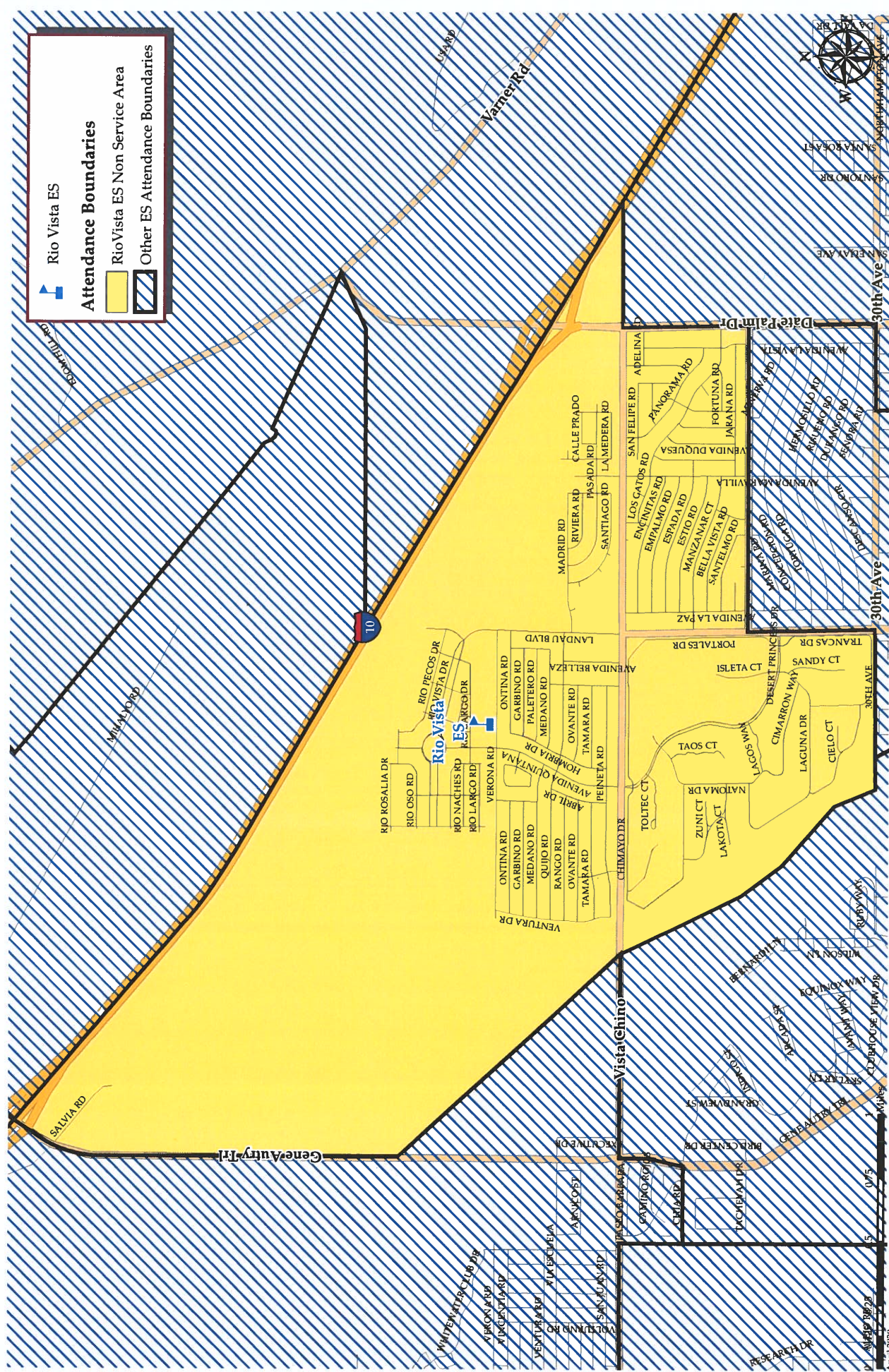


PALM SPRINGS UNIFIED SCHOOL DISTRICT

RANCHO MIRAGE ES BUSING ZONES



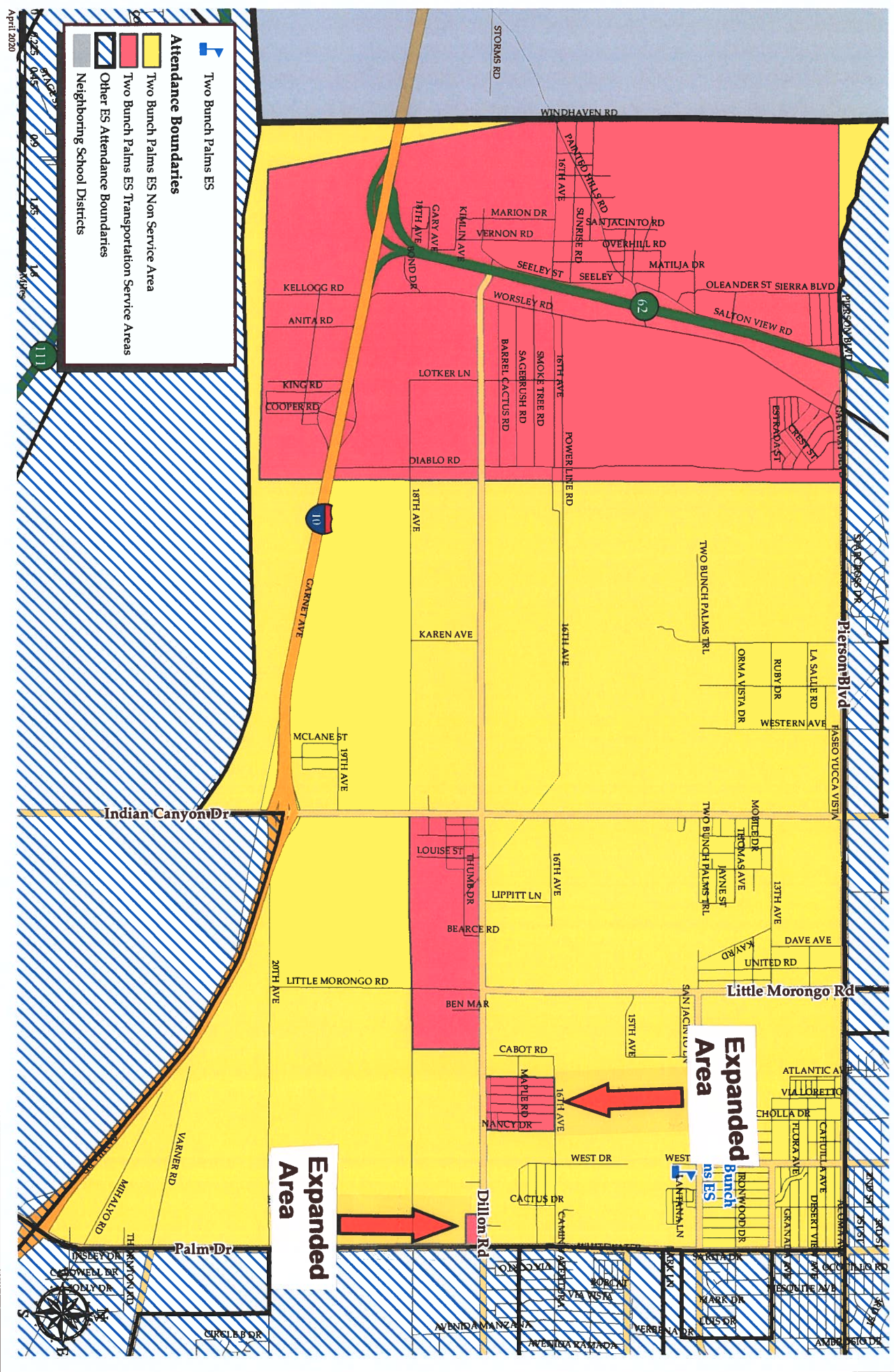
RIO VISTA ES BUSING ZONES



SUNNY SANDS ES BUSING ZONES

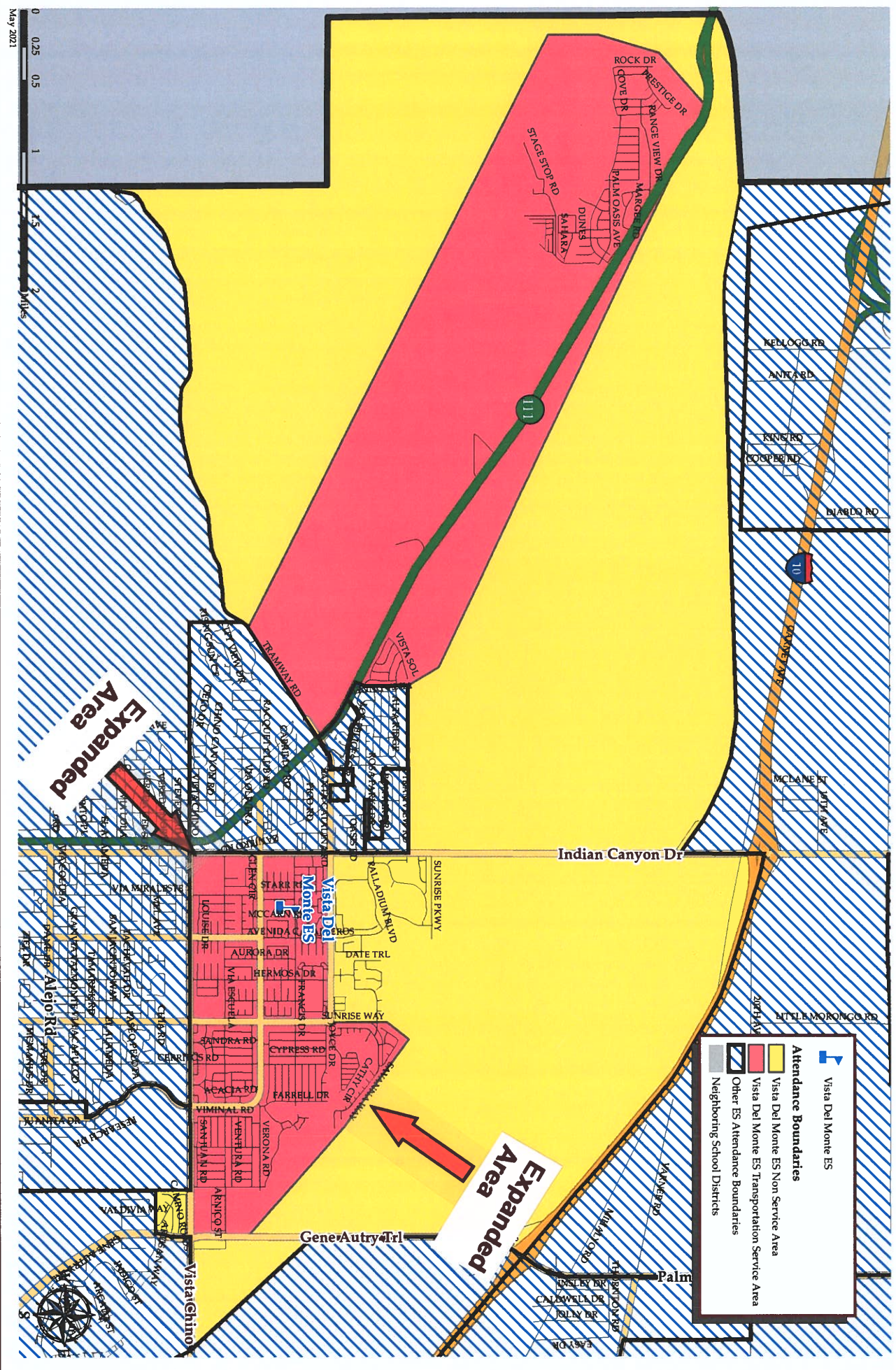


TWO BUNCH PALMS ES BUSING ZONES



PALM SPRINGS UNIFIED SD

VISTA DEL MONTE ES BUSING ZONES



**COOPERATIVE
STRATEGIES**

COMPLETE FINANCIAL & DEMOGRAPHIC PLANNING FOR EDUCATION